













## LV current transformers for tariff metering



- All types of connections
- Primary from 50 to 3,000 A
- Classes 0.5 and 0.2s
- Single, bi or tri-rating
- Tailored products

# Choosing your current transformer

		TYPE OF CONNECTION				ACCURACY CLASS	RATED BURDEN	RATING		
		Wound primary	Cable primary (diameter in mm)	Busbar primary (mm)	Cable clamp (section mm <sup>2</sup> )			Single-rating	Bi-rating	Tri-rating
<b>CORE - SINGLE-PHASE</b>										
JVR 86		Ø M8/M10 > 75 A				0.5	20 VA			
JVO 40-100			Ø 42			0.5	15 VA (except bi-rating: 7.5 or 15 VA)		200 - 500 A	
JVO 40-100 S			Ø 40			0.2s	7.5 VA		200 - 500 A	
J3R 80B			Ø 66			0.5**	15 VA (except 300 A rating: 5 VA, 400 A rating: 10 VA)			
JVO 90-160 S			Ø 90			0.2s	7.5 VA			500 - 1 000 - 2.000 A
JVP 1025				100 x 20		0.5	15 VA (except 1,250 A rating: 30 VA)			
JVP 1045				100 x 40		0.5	600 A rating: 15 VA 1,000 A rating: 30 VA			
JVP 1045B				100 x 40		0.5	15 VA (except bi-rating: 7.5 or 15 VA)			
JVP 1145 S				100 x 12		0.2s	7.5 VA			500 - 1 000 - 2.000 A
<b>PLATE-MOUNTING - THREE-PHASE</b>										
TRI 500					50 to 240	0.5	15 VA			
TRI 700					50 to 240	0.5	3.75 VA			
TRI 700 S					50 to 240	0.2s	7.5 VA			

\* Also available with 1 A secondary. Please contact us. \*\* Possibility of an improved accuracy class. Please contact us.



## In our factories

Our instruments are manufactured in France and checked on site with our test benches.



## 2 types of models: core and plate-mounted

Our products are developed and qualified according to the specifications stipulated by the distribution network managers and correspond in technical terms to the requests for proposals on this market.

There are 2 main categories: **cores** and **plate-mounted** models.

The "cores" category comprises:

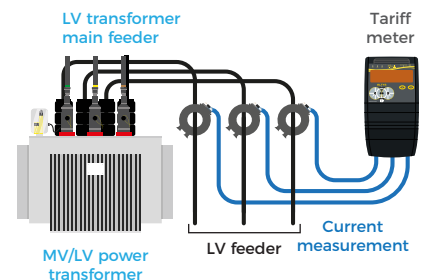
- wound primaries,
- cable primaries,
- busbar primaries.



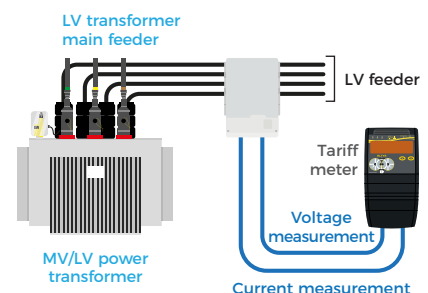
## Checking

Individual checking of each product with a **test certificate** for certified products or on request.

### CORE SOLUTION



### PLATE-MOUNTED SOLUTION





# To order

## Wound primary



JVR 86	
Primary	Reference
5 A	JVRC 8742
20 A	JVRC 8745
40 A	JVRC 8748
50 A	JVRC 8749
60 A	JVRC 8750
75 A	JVRC 8751
100 A	JVRC 8752
150 A	JVRC 8754
200 A	JVRC 8755

## Three-phase plate-mounted model



TRI 500	
Primary*	Reference
50 A	TRI5 7823
100 A	TRI5 7825
150 A	TRI5 7826
200 A	TRI5 7827
300 A	TRI5 7828
500 A	TRI5 7831

\* 75 A, 250 A, 400 A, 600 A on request



TRI 700	
Primary	Reference
100 - 200 - 500 A	P01379514



TRI 700 S	
Primary	Reference
50 - 100 A	P01379515
100 - 200 A	P01379516
200 - 500 A	P01379517

## Cable primary



Primary	Reference/Power (VA)	
	7.5	15
200 A	JVON 7100	JVON 7101
500 A	JVON 7104	JVON 7102



Primary	Reference
200 - 500 A	P01379512



Primary	Reference
500 - 1 000 - 2,000 A	P01379513



Primary	Reference
300 A	J3RC 7525
400 A	J3RC 7528
500 A	J3RC 7527
600 A	J3RC 7529
750 A	J3RC 7526
1,000 A	J3RC 7530
1,250 A	J3RC 7532
1,500 A	J3RC 7533

## Busbar primary



Primary	Reference
500 A	JVPT 8896
600 A	JVPT 8897
1,250 A	JVPT 8900



Primary	Reference
600 A	JVPU 8908
1,000 A	JVPU 8910



Primary	Reference/Power (VA)	
	7.5	15
500 A	JVPA 7569	JVPA 7573
1,000 A	JVPA 7589	JVPA 7576
2,000 A	JVPA 7589	JVPA 7585
500 - 1,000 A	JVPA 7590	JVPA 7588
1 000 - 2,000 A		



Primary	Reference
500 - 1 000 - 2,000 A	P01379510

## Tailored products

For any other tailored product, please contact us (indicating primary current value, secondary current value, accuracy class and VA rating).

FRANCE  
Chauvin Arnoux Energy  
16, rue Georges Besse  
92182 ANTONY Cedex  
Tél : +33 1 75 60 10 30  
Fax : +33 1 46 66 62 54  
caenergy@chauvin-arnoux.com  
www.chauvin-arnoux-energy.com

INTERNATIONAL  
Chauvin Arnoux Energy  
16, rue Georges Besse  
92182 ANTONY Cedex - FRANCE  
Tél : +33 1 75 60 10 30  
Fax : +33 1 46 66 62 54  
caenergy@chauvin-arnoux.com  
www.chauvin-arnoux-energy.com

SUISSE  
Chauvin Arnoux AG  
Moosacherstrasse 15  
8804 AU / ZH  
Tél : +41 44 727 75 55  
Fax : +41 44 727 75 56  
info@chauvin-arnoux.ch  
www.chauvin-arnoux.ch