

Control Panel Systems Human-Machine Interface



CPS Touch ■

Innovation - Simplicity - Performance

CPS Touch Range

New-generation
Human-Machine
Interface



Take a at your pr

User-friendliness

Fingertip control of your processes with the high-resolution touch screen (4.3 to 15 inches).



Creativity

Creating and customizing your screens becomes child's play with the libraries of symbols and graphic objects. Your environment is configured with a single click.

Remote control

Use the Ethernet connection to access all the data on your CPS Touch® anywhere in the world.



Security

Access to the objects and machine parameters is protected by passwords, with 9 security levels per user. Data recording and processing comply with the requirements of FDA 21 CFR Part 11.

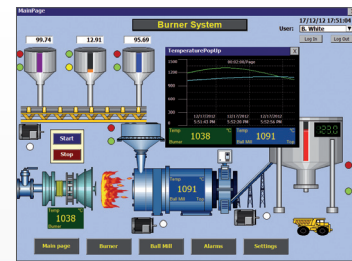


A new look to processes!



Variety

The CPS Touch® range comprises 5 models which meet all requirements, from the simplest to the most demanding.



CPS Touch 15
for more comprehensive use

Development

Simplify your device and communication management with the built-in **OPC server**. Test PC applications quickly with offline and online simulation.

This helps to save time and reduce development costs.

Offline and Online simulation / projects via Ethernet or USB.

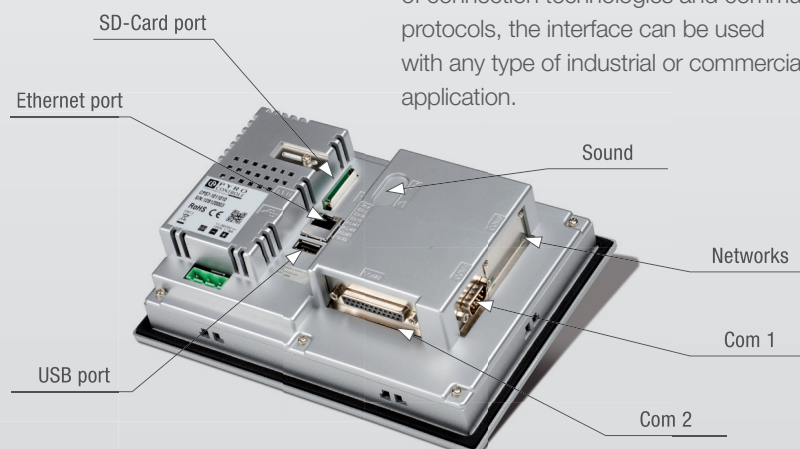
Rugged design

The **IP65** CPS Touch® models are designed to withstand severe environments.

The **IP66K** option available on some models is particularly suitable for the agri-food and pharmaceutical sectors.

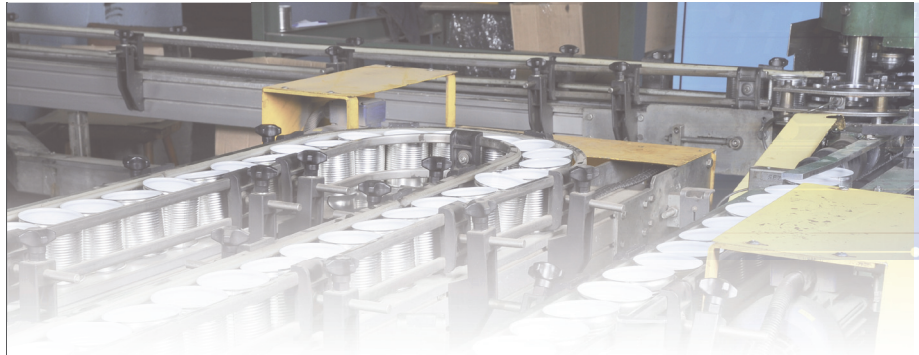
Adaptability

Thanks to the inclusion of a wide variety of connection technologies and communication protocols, the interface can be used with any type of industrial or commercial application.



CPS Studio Software

Simple
Project Configuration



Build your to match your

Customization of the graphical interface

Creation of templates

- Single page.
- Re-usable model page.
- Pop-up page.

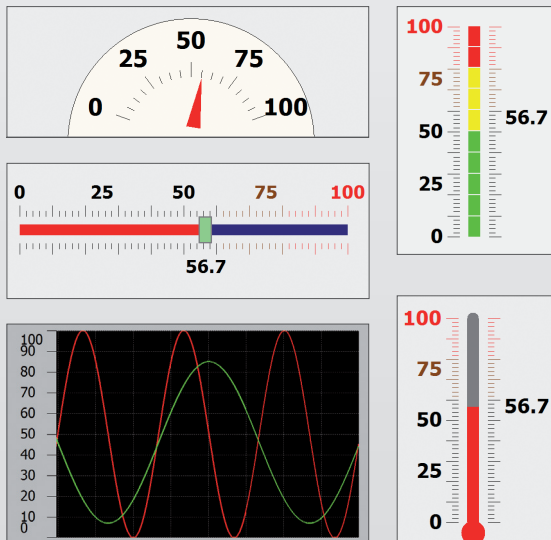
Ready-to-use object library

Standard objects

- **Comprehensive palette of objects:** shapes, alarms, buttons, text, list, display, input, user, recipes, etc.
- **Extended customization:** colour gradations, transparency, texture, gradient, etc.
- **Animation of objects:** filling, moving, resizing.

Advanced objects

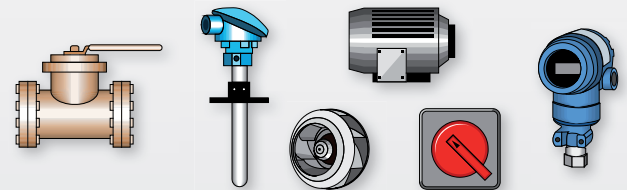
Improve your data displays with the tools developed specifically for that purpose (trend curves, level, cursor, etc.)



Graphic symbols

CPS Studio includes a library of **112 vectorial symbols for representing the system in the application.**

Animations: flipping, rotation and colour changes (up to 32 value bands).



CPS Studio Plus option:

CPS Studio Plus includes *Symbol Factory*[®], an image bank of more than **4,000 vectorial symbols for representing the actuators, sensors, many electrical and mechanical elements and symbols.**

Animations: flipping, rotation and colour changes (up to 50 value bands).

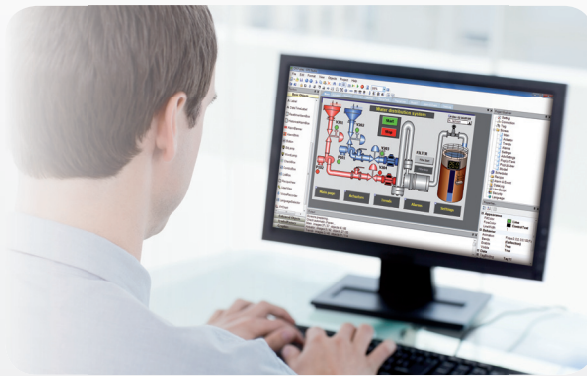


Customize your image library:

Possibility of incorporating **your own visuals** (bmp, wmf, jpg, gif and png formats).

application environment

Advanced Functions



Alarm management

6 types of alarms per tag and fixed-value alarm levels or alarm levels linked to a tag.



Recipe management

Input of recipe settings when creating or running the application.



Recordings

Real-time and historical trend curves, recording of events and alarms. The recordings are made using an unfalsifiable proprietary format.



Security levels

9 security levels per user. Data backup and protection compliant with the FDA 21 CFR Part 11 standard.



Integrated script editor

The software includes an easy-to-use integrated script editor (C language) capable of advanced processing.



Multiple languages

Quick and easy language changes. Simple adaptation of your projects abroad while keeping the same application.



Scheduler

Trigger operations automatically at a specific moment or at predefined time intervals.



Data management

The Historical Viewer software gives access to all the data and all the operations performed via a single interface, allowing users to recover the history and the alarms on their PC.



Easy printing

CPS Touch® handles printing of screenshots or event lists on USB printers or network printers supporting the PCL and ESCP protocols.



OPC Server/Client






Using its numerous integrated drivers, the OPC server establishes communication between the HMI, the PLCs and the slaves. The OPC server and OPC Client diagnostic tools can be used to test communication with the PLC and the slaves directly on the PC.

Choose your

CPS Touch



Technical Specifications

		Options as required	 CPS4	 CPS7L	 CPS7	 CPS10	 CPS15
Screen	Screen		Analogue touch screen, 65,536 colours, TFT				
	Size (inches)		4.3	7		10	15
	Resolution (pixels)		480 x 272	800 x 480		1024 x 768	1024 x 768
	Backlighting			LED			CCFL
	MTBF for backlighting		30,000 Hours	50,000 Hours			
Power Supply	Voltage	1: 11 to 36 VDC 2: 90 to 250 VAC	1	1 or 2			
	Consumption		<10W	<12W	<13W	<15W	<27W
Sound	Sound board + Logical Inputs/Outputs	0: No 1: Yes	0	0	0 ou 1		
Storage	Memory		128 MB FLASH ROM (application memory), 128 MB RAM	128 MB FLASH ROM (application memory), 256 MB RAM			
	SD card	0: No 1: Yes	1				
Communication	Ethernet	0: No 1: Yes	1	0	1	1 (x 2)	1 (x 2)
	Interfaces		USB - Com 1 port: RS232C, DB9 male - Com 2 port: RS232C/ RS422/ RS485, DB25 female				
Networks supported as standard or as option	Integrated protocols		Modbus RTU / Modbus TCP (Master / Slave)				
	Networks as option	0: No 1: MPI/Profibus-DP 2: ProfiNet 3: DeviceNet 4: EtherNet/IP 5: CANopen 6: EtherCAT 7: BACnet/IP 8: CC-Link	0 to 8	0	0 to 8	0 to 8	0 to 8
Software	Software	1: CPS Studio 2: CPS Studio Plus with Symbol Factory®	1 or 2				
Casing	Material		Plastic	Plastic	Aluminium/Plastic Option: stainless steel	Aluminium Metal Option: stainless steel	Aluminium Metal Option: stainless steel
Environment	IP protection rating	0: Front: IP65 / Rear: IP20 1: Front panel IP66K	0		0 or 1		
	Resistance		Altitude: 2,000 metres / Temperature: 0 -50 °C / Humidity: 10% to 90% HR				
Mechanical specifications	Dimensions (LxHxP)		140 x 116 x 57 mm	212 x 156 x 57 mm		325 x 263 x 56 mm	400 x 310 x 56 mm
	Cabinet cut-out (LxH)		123 x 99 mm	197 x 141 mm		310 x 248 mm	367 x 289 mm
	Weight (kg)		0.5	1.2	1.4	3.6	5.1
Other parameters	Standard		WinCE6.0®				
	Additional functions		Installation of console: horizontal or vertical / real-time clock / screenshot printing				
	Operating system		CE certification				

Configure your CPS Touch®

To order, note the options chosen in the empty boxes in the table below to obtain the reference

Model	CPS4	CPS7L	CPS7	CPS10	CPS15
Voltage	1				
Sound board	0	0			
SD Card	1	1	1	1	1
Ethernet	1	0	1	1	1
Networks as option		0			
Software					
IP	0	0			

E.g.: CPS7,
Voltage 11 to 36 VDC (1),
Sound board yes (1),
SD Card yes (1),
Ethernet (1),
Network: ProfiNet (2),
CPS Studio Plus software (2),
IP65 (0)

→ order CPS7-1111220

As an expert in temperature process control, **Pyrocontrol** is offering an innovative Human-Machine Interface solution. The comprehensive, user-friendly, **CPS Touch®** range is easy to integrate and enables you to improve your productivity while reducing your maintenance costs. With **CPS Touch®**, centralize your data and supervise your installations in real time with fingertip control.

Your Partner

- Familiarization and training on the products in the **CPS Touch®** range,
- Development of specific applications according to specifications.



PDM Series I/O Modules

Pyrocontrol proposes remote **input/output modules** which are particularly suitable for interfacing with the **CPS Touch®** range for any application or environment involving industrial automation: temperature inputs, analogue and digital inputs/outputs, relays, etc.

Model	Description
PDM-10DI	10 digital inputs
PDM-DIO	6 digital inputs & 2 relay outputs
PDM-5RO	5 relay outputs
PDM-10DO	10 digital outputs
PDM-4AI	4 analogue inputs
PDM-8AI	8 analogue inputs
PDM-3AO	3 analogue outputs
PDM-PID	1 analogue input 1 analogue output + PID control
PDM-4TC	4 thermocouple inputs
PDM-8TC	8 thermocouple inputs
PDM-4RTD	8 Pt100 inputs
PDM-LINK	Radio transmission module
PDM-ETH	Modbus TCP



AUSTRIA

Chauvin Arnoux Ges.m.b.H
Slamastrasse 29/2/4
1230 WIEN
Tel.: +43 1 61 61 9 61
Fax: +43 1 61 61 9 61-61
vie-office@chauvin-arnoux.at
www.chauvin-arnoux.at

CHINA

Shanghai Pu-Jiang
Enerdis Instruments Co. Ltd
3 F, 3 rd Building
N° 381 Xiang De Road
200081 SHANGHAI
Tel.: +86 21 65 21 51 96
Fax: +86 21 65 21 61 07
info@chauvin-arnoux.com.cn

GERMANY

Chauvin Arnoux GmbH
Straßburger Str. 34
77694 KEHL / RHEIN
Tel.: +49 07851 99 26-0
Fax: +49 07851 99 26-60
info@chauvin-arnoux.de
www.chauvin-arnoux.de

ITALY

AMRA SpA
Via S. Ambrogio, 23/25
20050 MACHERIO (MI)
Tel.: +39 039 245 75 45
Fax: +39 039 481 561
info@amra-chauvin-arnoux.it
www.chauvin-arnoux.it

MIDDLE EAST

Chauvin Arnoux Middle East
PO Box 60-154
1241 2020 JAL EL DIB
(Beirut) - LEBANON
Tel.: +961 1 890 425
Fax: +961 1 890 424
camie@chauvin-arnoux.com
www.chauvin-arnoux.com

SPAIN

Chauvin Arnoux Iberica SA
C/ Roger de Flor N°293, 1a
Planta
08025 BARCELONA
Tel.: +34 902 20 22 26
Fax: +34 93 459 14 43
comercial@chauvin-arnoux.es
www.chauvin-arnoux.es

SCANDINAVIA

CA Mätssystem AB
Box 4501
SE 18304 Täby
Tel.: +46 8 50 52 68 00
Fax: +46 8 50 52 68 10
info@camatsystem.com
www.camatsystem.com

SWITZERLAND

Chauvin Arnoux AG
Moosacherstrasse 15
8804 AU / ZH
Tel.: +41 44 727 75 55
Fax: +41 44 727 75 56
info@chauvin-arnoux.ch
www.chauvin-arnoux.ch

UNITED KINGDOM

Chauvin Arnoux Ltd
Unit 1 Nelson Ct, Flagship Sq
Shaw Cross Business Pk,
Dewsbury
West Yorkshire - WF12 7TH
Tel: +44 1924 460 494
Fax: +44 1924 455 328
info@chauvin-arnoux.co.uk
www.chauvin-arnoux.com

USA

Chauvin Arnoux Inc
d.b.a AEMC Instruments
200 Foxborough Blvd.
Foxborough - MA 02035
Tel.: +1 (508) 698-2115
Fax: +1 (508) 698-2118
sales@aemc.com
www.aemc.com

Contact :
automation@pyro-controle.tm.fr

Pyrocontrole

6, bis avenue du Docteur Schweitzer
69881 Meyzieu Cedex
FRANCE
Tel.: +33 4 72 14 15 40
Fax: +33 4 72 14 15 41

With its seven brands (Chauvin Arnoux[®], Metrix[®], Multimetrix[®], Enerdis[®], Pyrocontrole[®], AEMC[®] and AMRA[®]) and its metrology and regulatory testing subsidiary, Manumasure, Chauvin Arnoux is one of the European leaders in measurement, energy performance, industrial thermography and metrology.



FRANCE

Pyrocontrole
6 bis, av du Docteur Schweitzer
69881 MEYZIEU Cedex
Tel: +33 4 72 14 15 40
Fax: +33 4 72 14 15 41
info@pyro-controle.tm.fr
www.pyro-controle.com

USA

Chauvin Arnoux Inc
d.b.a AEMC Instruments
200 Foxborough Blvd.
Foxborough - MA 02035
Tel.: +1 (508) 698-2115
Fax: +1 (508) 698-2118
sales@aemc.com
www.aemc.com

MIDDLE EAST

Chauvin Arnoux Middle East
PO Box 60-154
1241 2020 JAL EL DIB
(Beirut) - LEBANON
Tel.: +961 1 890 425
Fax: +961 1 890 424
camie@chauvin-arnoux.com
www.chauvin-arnoux.com